

The Plant

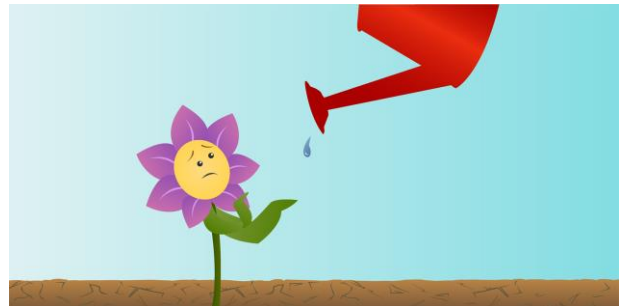
What are plants?

Plants are living organisms that cover much of the land of planet Earth. You see them everywhere. They include grass, trees, flowers, bushes, ferns and mosses. We need plants to survive. We use plants for food, shelter, clothing, medicines and even the air we breathe.

What does a plant need to grow?

A plant needs these things to grow well:

- air
- light
- warmth
- water
- nutrients



Poor **air** circulation and pollution can damage plants leading to poor growth and even death.

Plants need **light** to grow and make food. If they don't get enough light then they won't have the energy to grow big and strong. Their leaves will be small and even yellow in colour.

Plants need **warmth** to help them grow. If it is too cold, plants cannot carry out certain tasks they need to survive. This is also true if it is too warm.

Plants need **water** to help absorb (take in) and transport nutrients from the soil, make their food and even keep their shape. Have you ever seen a plant that hasn't been watered for a while?

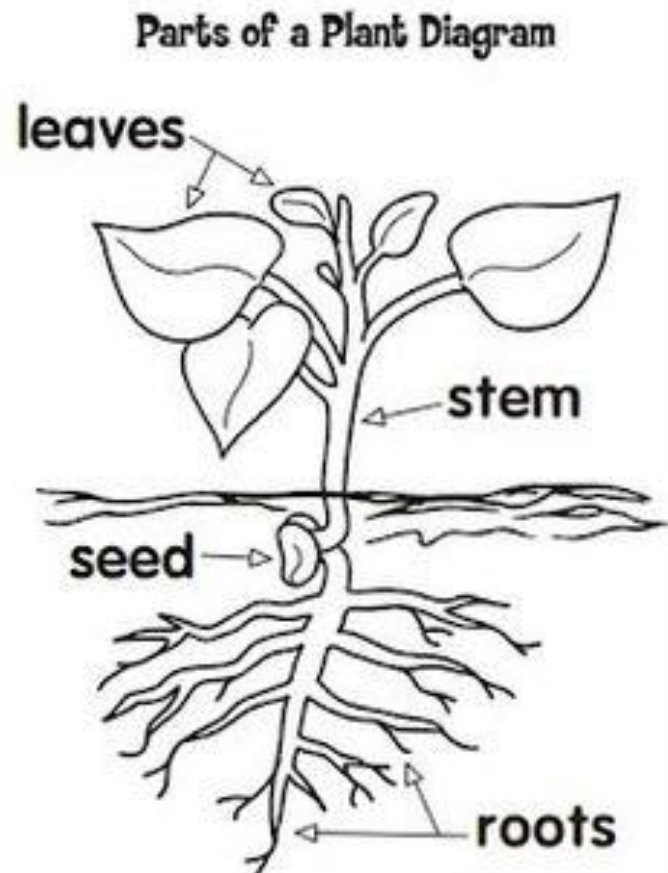
Plants need the **nutrients** from the soil to grow and stay healthy just like the vitamins and minerals we need

What the different parts of plants do?

The **roots** of a plant take up water and nutrients from the soil. The roots also keep the plant steady and upright in the soil; they "anchor" the plant.

The **stem** carries water and nutrients to different parts of the plant.

The **leaves** use light from the sun, along with carbon dioxide from the air and water to make food for the plant. This process is called **photosynthesis**.



Functions of the Plant Leaf

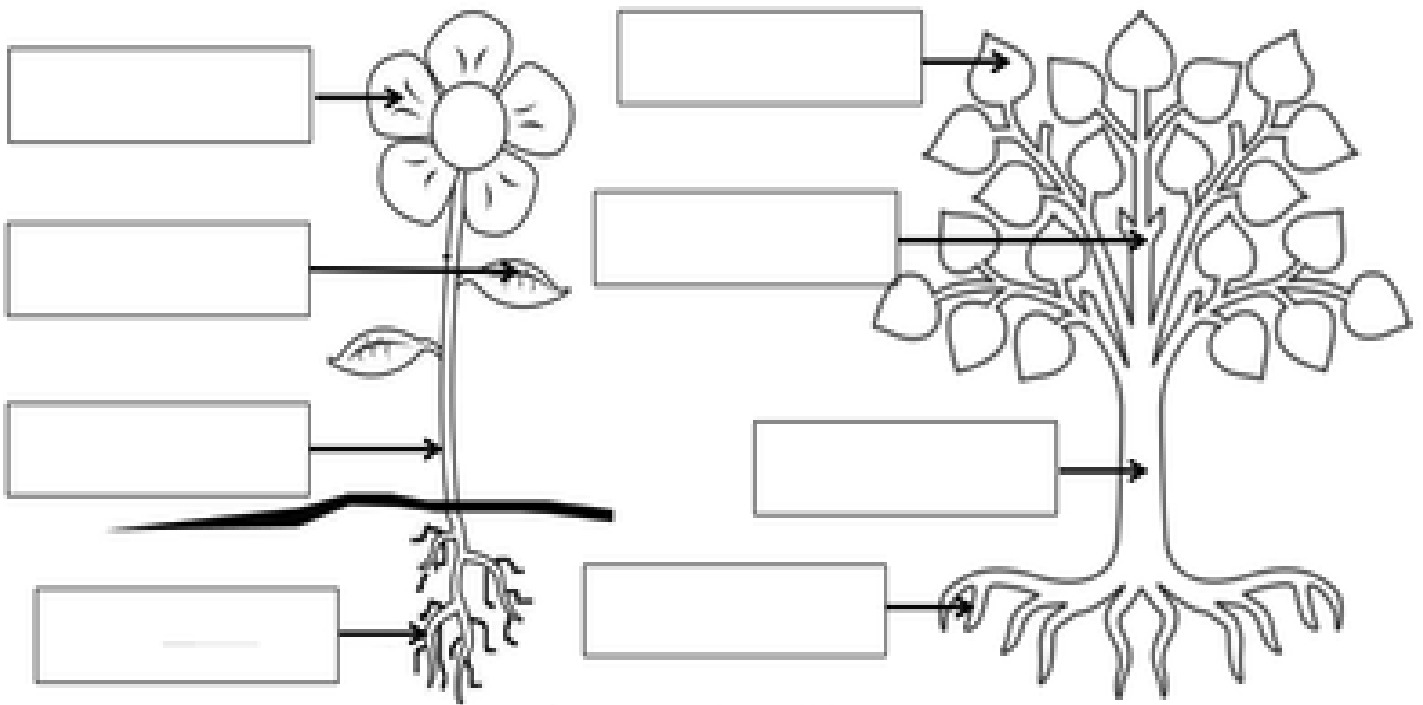
The leaf of the plant has three main jobs

- move oxygen (O_2) and carbon dioxide (CO_2) in and out of the plant
- evaporate (make the water disappear) the water (H_2O)
to move more water up from the roots
- capture sunlight for photosynthesis






Remember, trees are plants too. Use the words in the box to label the parts of the plants below

Roots	Branch	Leaf	Trunk	Stem	Petal
-------	--------	------	-------	------	-------

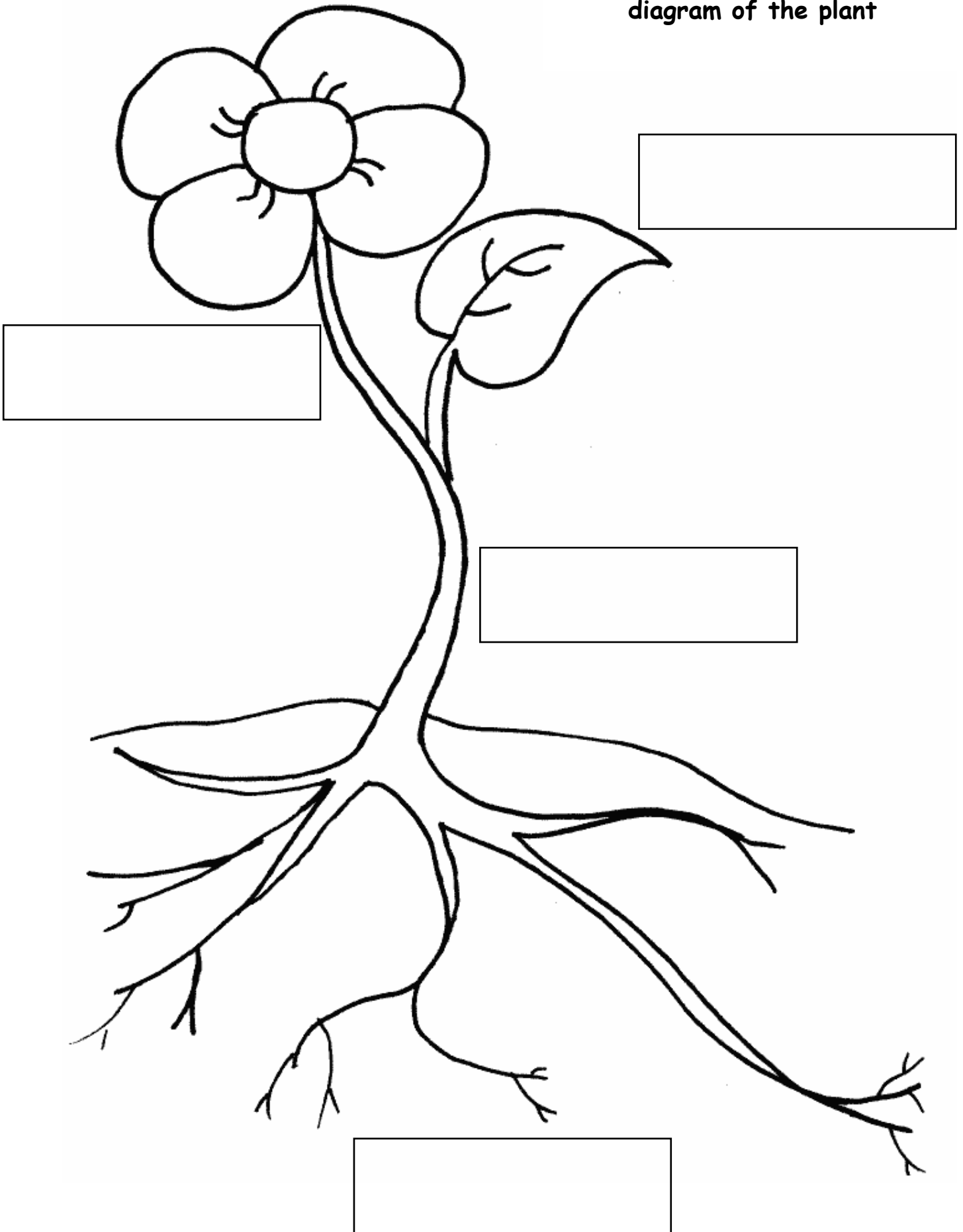


© SomeTeachersSundays.com 2013

How do each of these help the plant to grow?

Colour and label the diagram of the plant



Test Yourself.
Spell each part of the plant correctl

